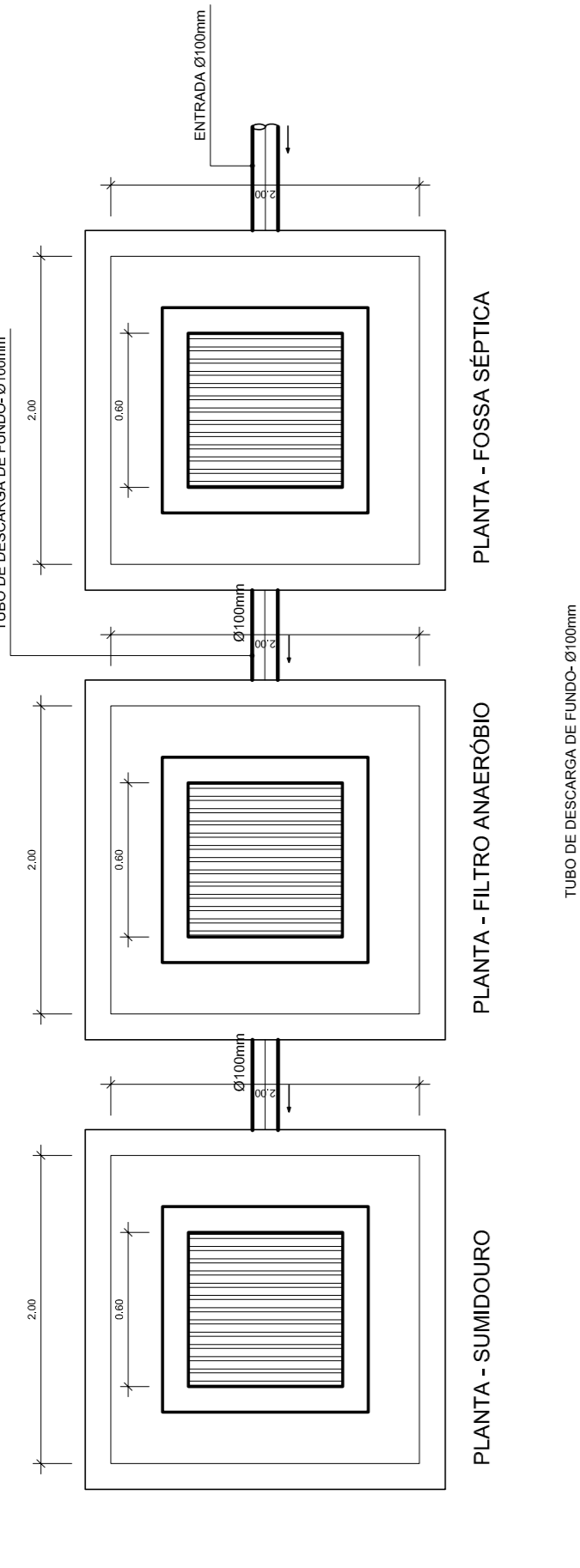


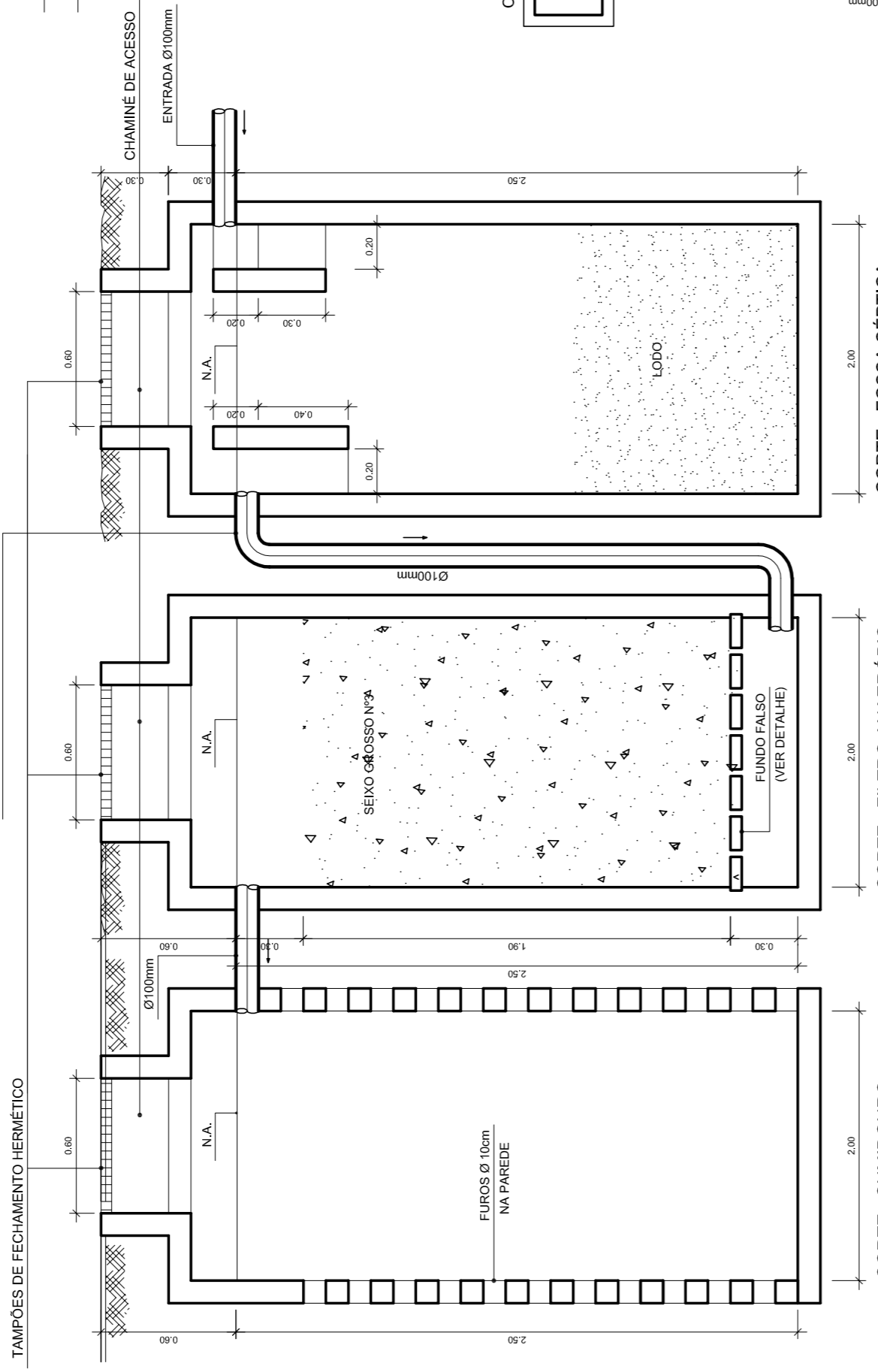
DETALHE DO FILTRO ANAERÓBIO E FOSSA SÉPTICA
ESCALA: 1/25



PLANTA - FOSSA SÉPTICA

PLANTA - FILTRO ANAERÓBIO

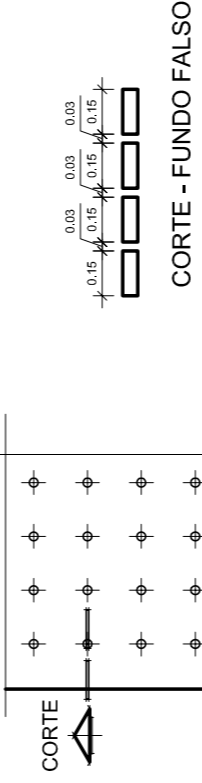
PLANTA - SUMIDOURO



CORTE - FOSSA SÉPTICA

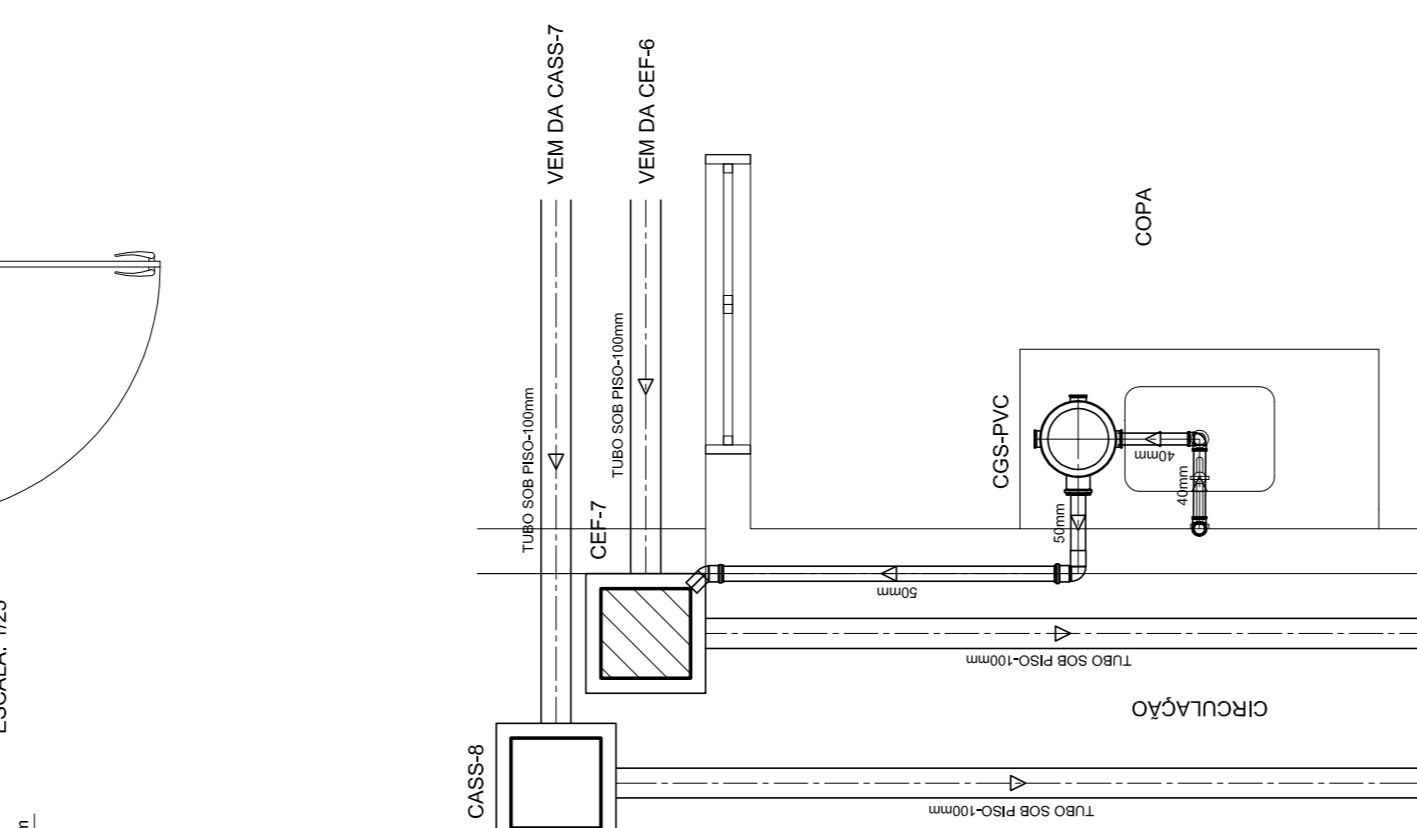
CORTE - FILTRO ANAERÓBIO

CORTE - SUMIDOURO

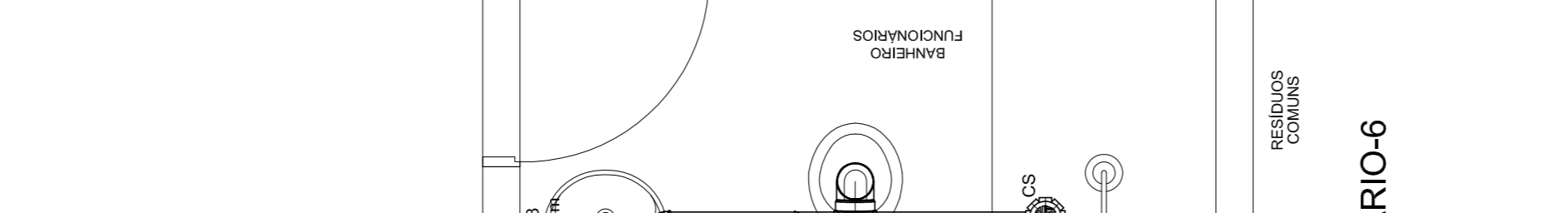


DETALHE - FUNDO FALSO

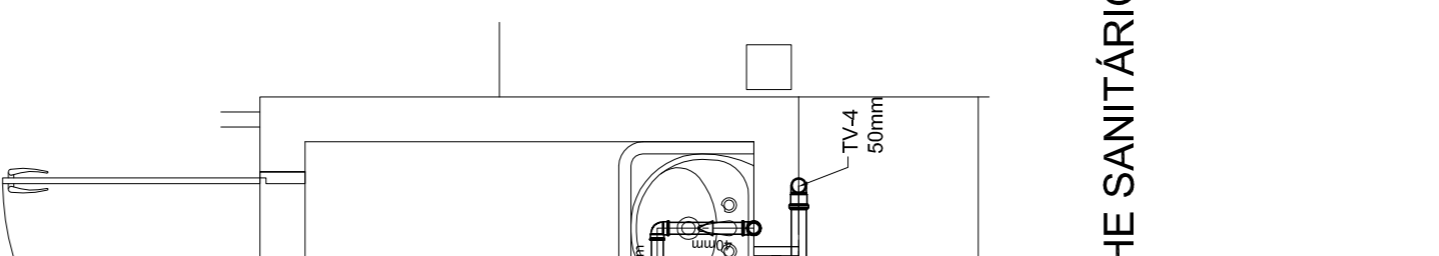
DETALHE SANITÁRIO-1
ESCALA: 1/25



DETALHE SANITÁRIO-2
ESCALA: 1/25



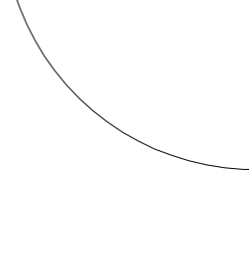
DETALHE SANITÁRIO-3
ESCALA: 1/25



DETALHE SANITÁRIO-4
ESCALA: 1/25



DETALHE SANITÁRIO-7
ESCALA: 1/25



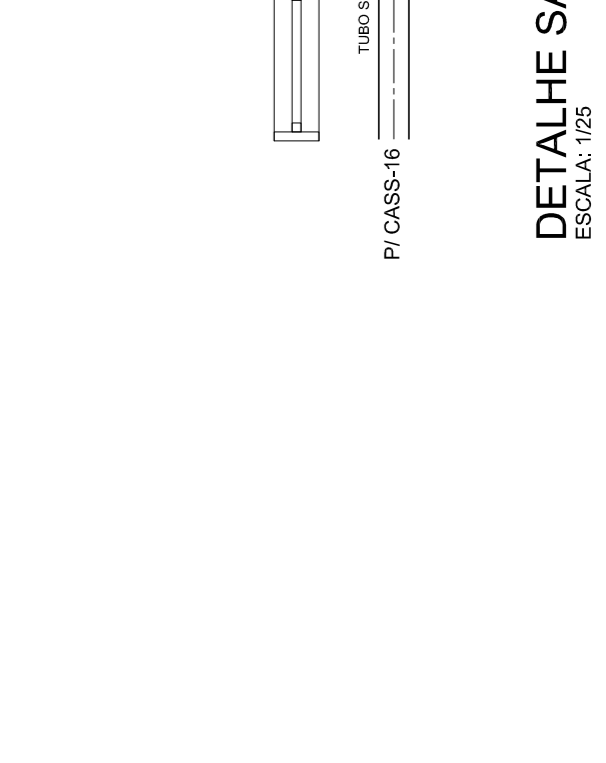
DETALHE SANITÁRIO-6
ESCALA: 1/25



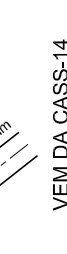
DETALHE SANITÁRIO-5
ESCALA: 1/25



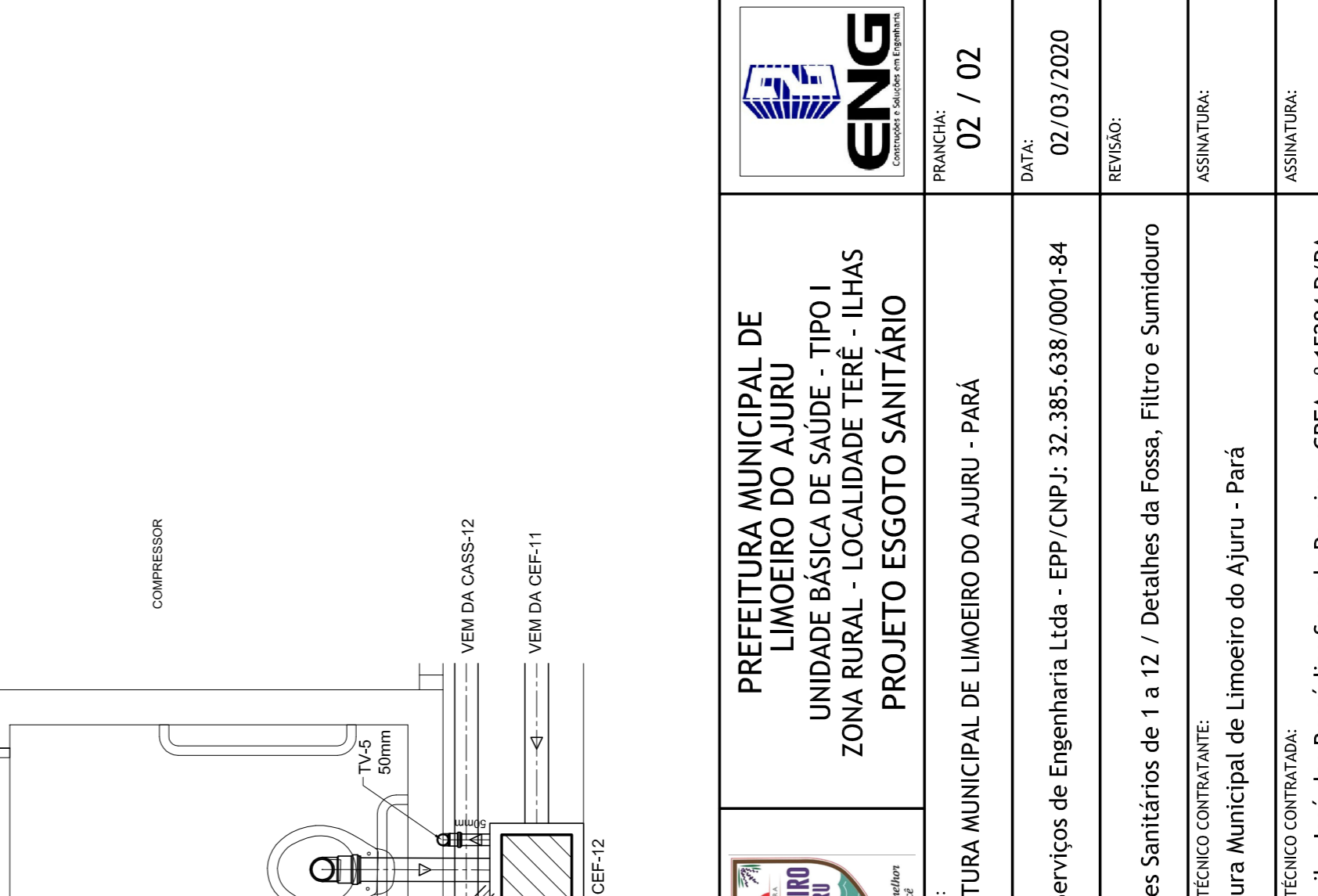
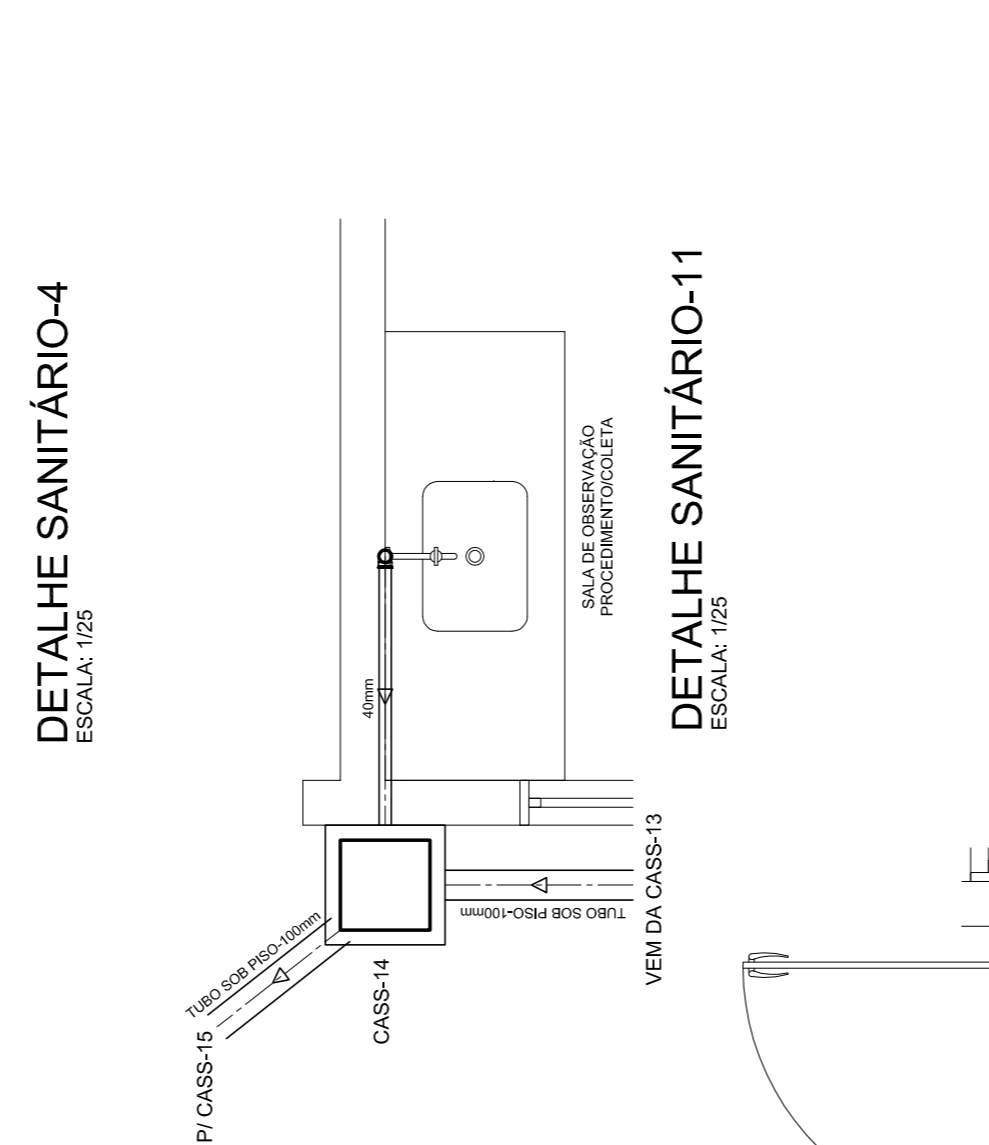
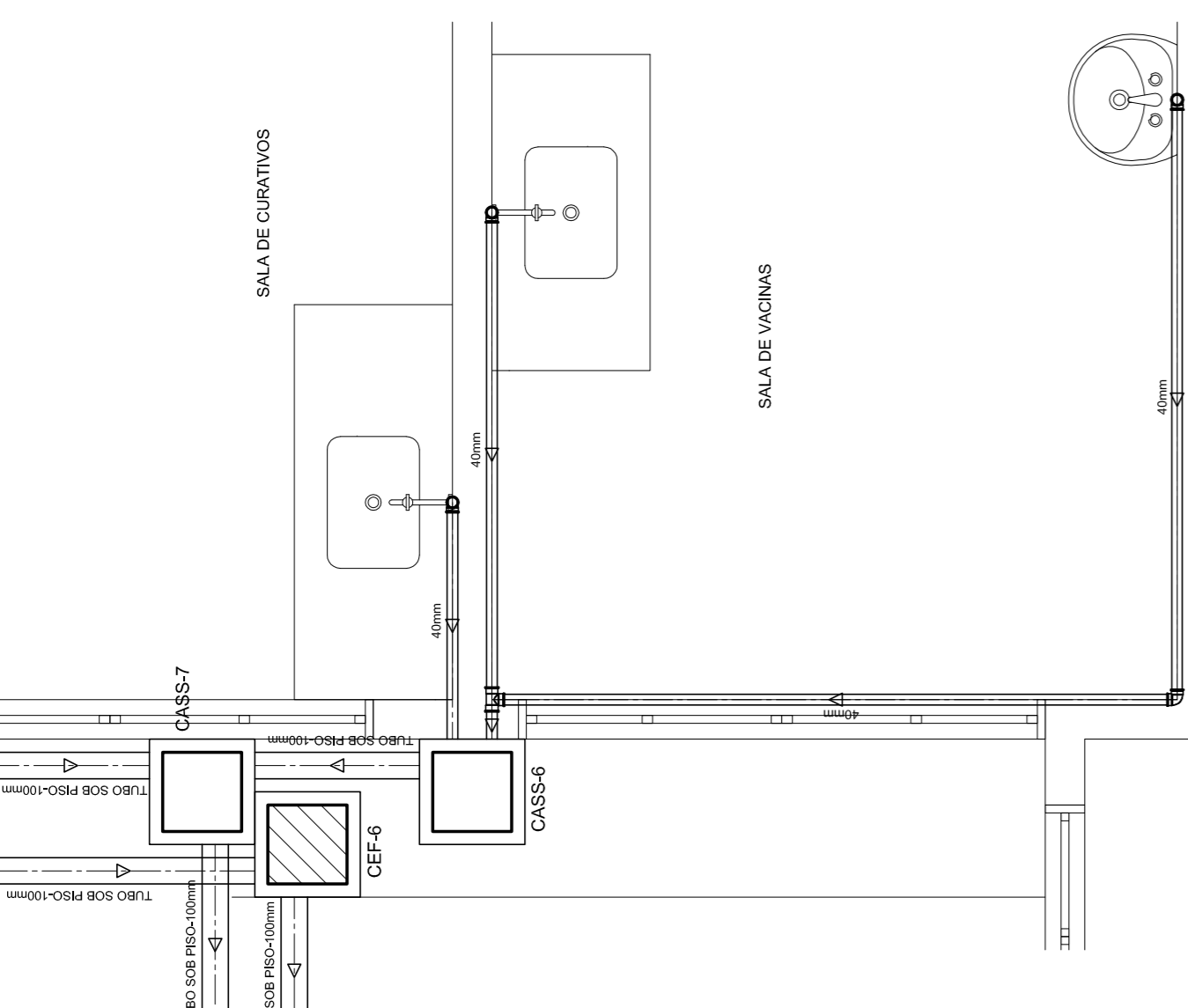
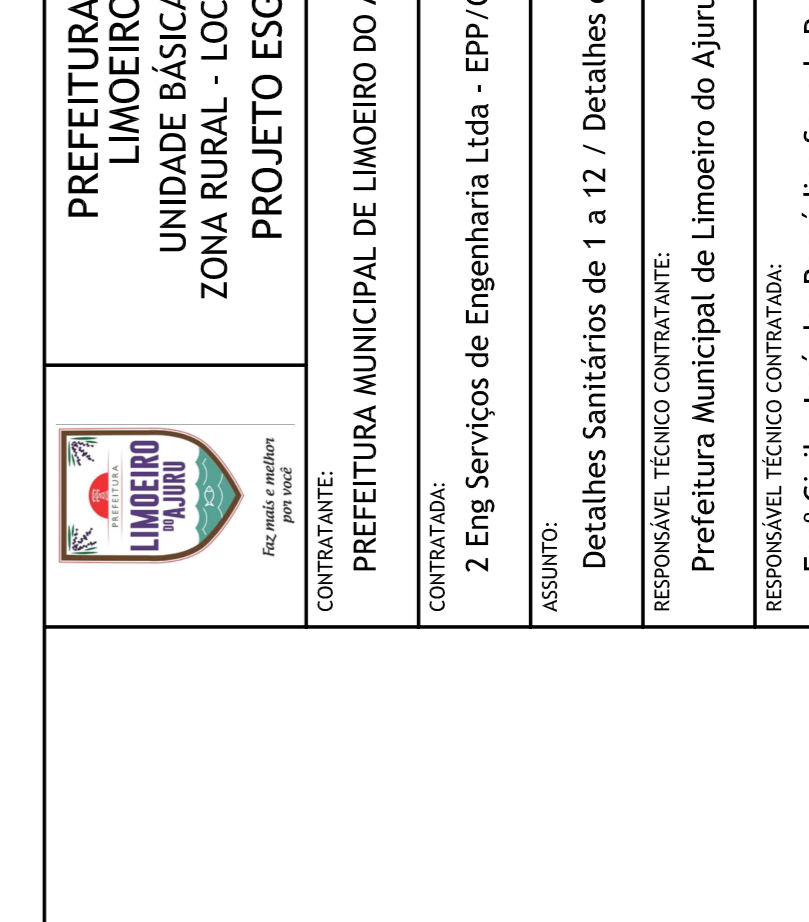
DETALHE SANITÁRIO-9
ESCALA: 1/25



DETALHE SANITÁRIO-12
ESCALA: 1/25



DETALHE SANITÁRIO-10
ESCALA: 1/25



OBSERVAÇÕES:

	PREFEITURA MUNICIPAL DE LIMOEIRO DO AJURU UNIDADE BÁSICA DE SAÚDE - TIPO I ZONA RURAL - LOCALIDADE TERÉ - ILHAS PROJETO ESGOTO SANITÁRIO	
	CONTRATANTE: PREFEITURA MUNICIPAL DE LIMOEIRO DO AJURU - PARÁ	CONTRATADA: Z Eng Serviços de Engenharia Ltda - EPP / CNPJ: 32.385.638/0001-84
PRONOME: 02 / 02	DATA: 02/03/2020	ASSINATURA: ASSINATURA:
ASSUNTO: Detalhes Sanitários de 1 a 12 / Detalhes da Fossa, Filtro e Sumidouro		RESPONSÁVEL TÉCNICO CONTRATADA: Eng. Civil - José dos Remédios Sepeda Pereira - CREA nº 15284 D/PA